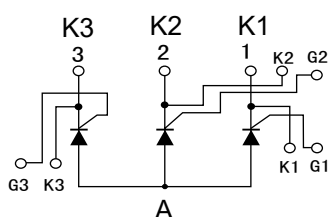
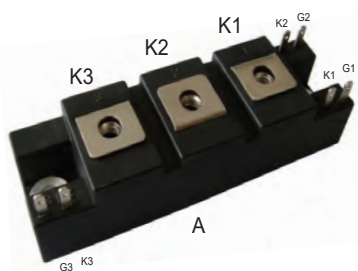
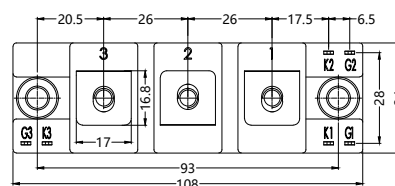
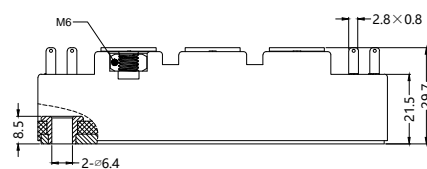


3TA200GKxxNB

Three Phase Thyristor Module (Half Bridge)



Dimensions in mm (1mm = 0.0394")



| Type | V_{RSM} V | V_{RRM} V |
|--------------|----------------|----------------|
| 3TA200GK03NB | 400 | 300 |
| 3TA200GK04NB | 500 | 400 |



| Symbol | Test Conditions | Maximum Ratings | Unit |
|------------------------------------|---|---------------------------------|----------------------|
| $I_{T(AV)}$ $I_{T(RMS)}$ | Single phase, half wave, 180° conduction, $T_c=114^\circ\text{C}$ | 200 314 | A |
| I_{TSM} | 1/2cycle, 50Hz/60Hz, peak value, non-repetitive | 5400/6000 | A |
| I^2t | | 495000 | A^2s |
| P_{GM} $P_{G(AV)}$ | | 10 1 | W |
| I_{FGM} | | 3 | A |
| V_{FGM} V_{RGM} | | 10 5 | V |
| di/dt | $I_G=150\text{mA}$, $T_j=25^\circ\text{C}$, $V_D=1/2V_{DRM}$, $dI_G/dt=1\text{A/us}$ | 60 | A/us |
| T_{VJ} T_{VJM} T_{stg} | | -30...+125 125 -30...+125 | $^\circ\text{C}$ |
| M_s M_t | to heatsink M6 to terminals M6 | 3 ~ 5 2.5 ~ 5 | Nm |
| Weight | | 210 | g |

3TA200GKxxNB

Three Phase Thyristor Module (Half Bridge)

| Symbol | Test Conditions | min. | typ. | max. | Unit |
|--|--|------|------|----------|------|
| I_{DRM} I_{RRM} | at V _{DRM} , single phase, half wave, T _j =125°C | | | 60 60 | mA |
| V_{TM} | On-State Current 630A, T _j =25°C Inst. measurement | | | 1.25 | V |
| I_{GT} | T _j =25°C, I _T =1A, V _D =6V | | | 150 | mA |
| V_{GD} | T _j =125°C, V _D =1/2V _{DRM} | 0.25 | | | V |
| t_{gt} | I _T =100A, I _G =200mA, T _j =25°C, V _D =1/2V _{DRM} , di _G /dt=1A/us | | | 10 | us |
| dv/dt | T _j =125°C, V _D =2/3V _{DRM} , Exponential wave | 150 | | | V/us |
| I_H | T _j =25°C | | 100 | | mA |
| R_{thJC} | Junction to case (1/3 Module) | | | 0.12 | °C/W |

FEATURES

- * International standard package
- * Copper base plate
- * Glass passivated chips
- * RoHS compliance

APPLICATIONS

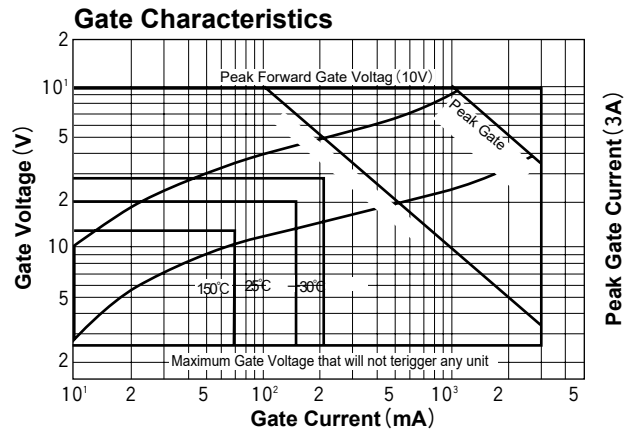
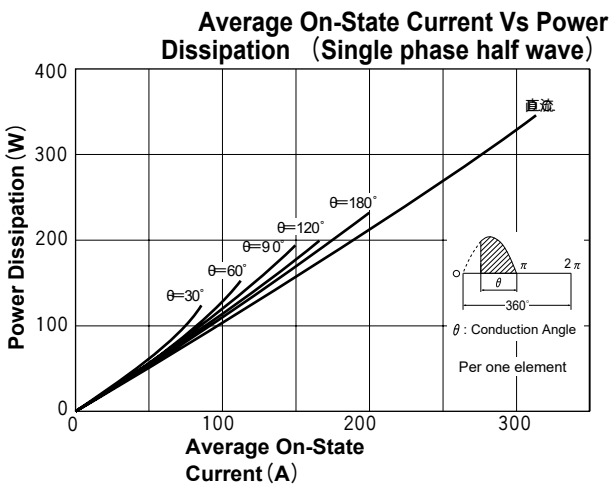
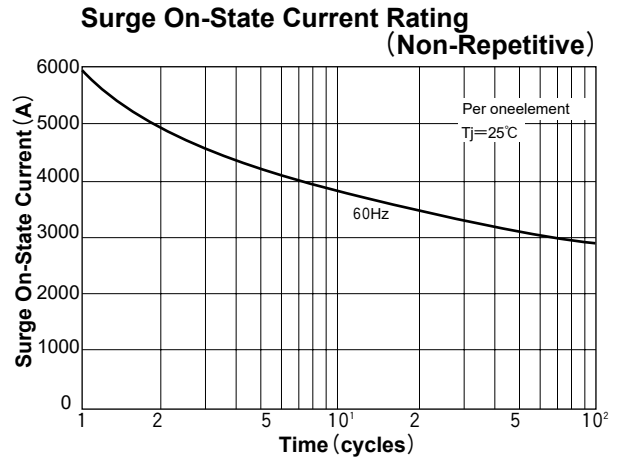
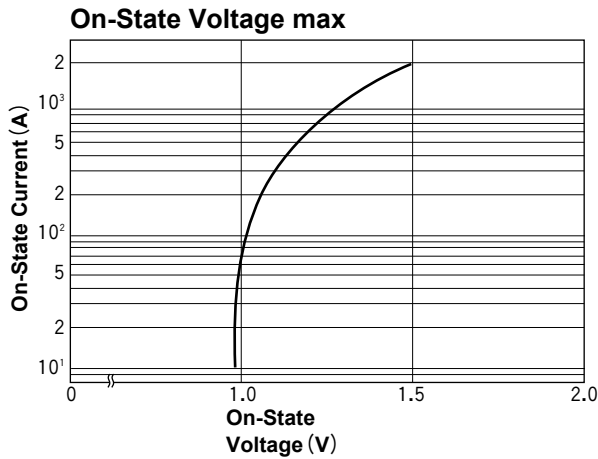
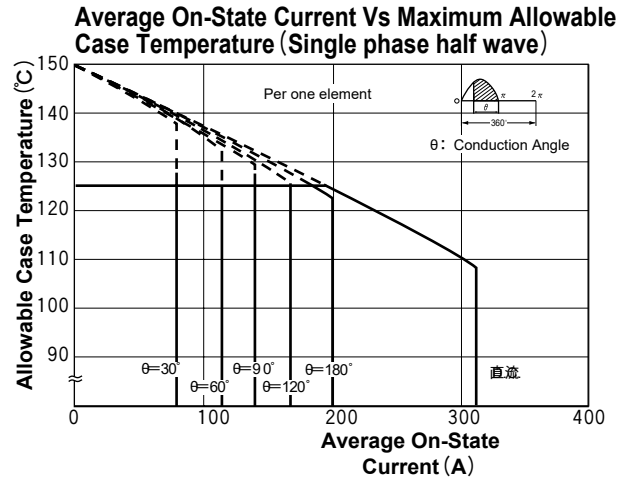
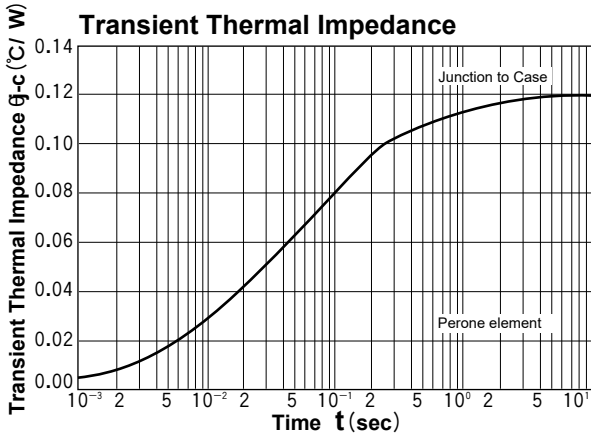
- * Welding Machine Power Supply
- * DC Power Supply

ADVANTAGES

- * Space and weight savings
- * Simple mounting with two screws
- * Improved temperature and power cycling
- * Reduced protection circuits

3TA200GKxxNB

Three Phase Thyristor Module (Half Bridge)



R

