

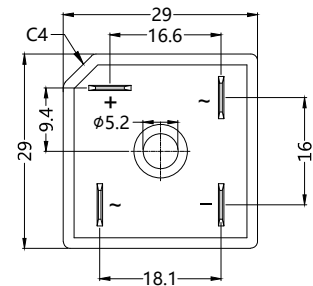
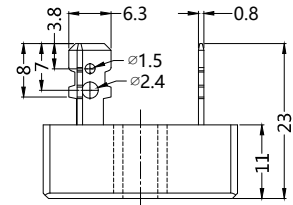
S1PDB2502 thru S1PDB2516

Single Phase Bridge Rectifiers

Dimensions in mm



	V _{RRM} V	V _{RWS} V	V _{DC} V
S1PDB2502	200	140	200
S1PDB2504	400	280	400
S1PDB2506	600	420	600
S1PDB2508	800	560	800
S1PDB2510	1000	700	1000
S1PDB2512	1200	840	1200
S1PDB2514	1400	980	1400
S1PDB2516	1600	1120	1600



Symbol	Characteristics	Maximum Ratings	Unit
I _(AV)	Maximum Average Forward Rectified Current @T _c =60°C (With Heatsink)	25.0	A
I _{FSM}	Peak Forward Surge Current 8.3ms Single Half-Sine-Wave Superimposed On Rated Load (JEDEC METHOD)	350	A
V _F	Maximum Forward Voltage At 12.5A DC	1.1	V
I _R	Maximum DC Reverse Current At Rated DC Blocking Voltage	@T _J =25°C 5.0 @T _J =125°C 500	uA
I ² t	I ² t Rating For Fusing (t < 8.3 ms), (Note 1)	374	A ² S
C _J	Typical Junction Capacitance Per Element (Note 2)	130	pF
R _{θJC}	Typical Thermal Resistance (Note 3)	1.3	°C/W
T _J	Operating Temperature Range	-55 to +150	°C
T _{STG}	Storage Temperature Range	-55 to +150	°C

NOTES: 1. Measured At Non-repetitive, For Greater Than 1ms And Less Than 8.3ms.
 2. Measured At 1.0MHz And Applied Reverse Voltage Of 4.0V DC.
 3. Device Mounted On 300mm x 300mm x 1.6mm Cu Plate Heatsink.

FEATURES

- * Rating to 1600V PRV
- * High efficiency
- * Glass passivated chip junction
- * Electrically isolated metal case for maximum heat dissipation
- * RoHS compliance

MECHANICAL DATA

- * Case: Molded plastic with Heatsink internally mounted in the bridge encapsulation
- * Polarity: As marked on Body
- * Mounting: Hole for # 10 screw
- * Weight: 18 grams

Sirectifier®

S1PDB2502 thru S1PDB2516

Single Phase Bridge Rectifiers

FIG.1 - FORWARD CURRENT DERATING CURVE

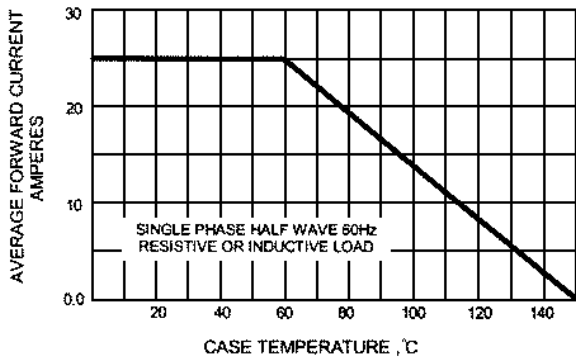


FIG.2 - MAXIMUM NON-REPETITIVE SURGE CURRENT

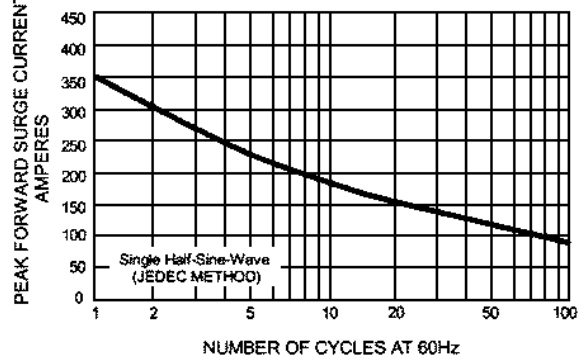


FIG.3 - TYPICAL JUNCTION CAPACITANCE

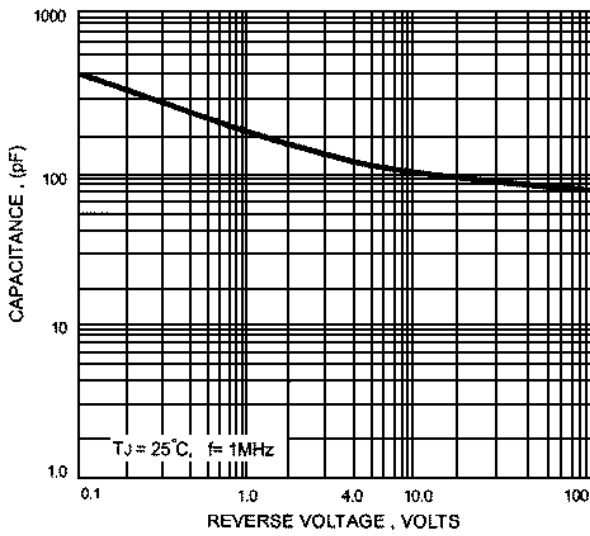


FIG.4 - TYPICAL FORWARD CHARACTERISTICS

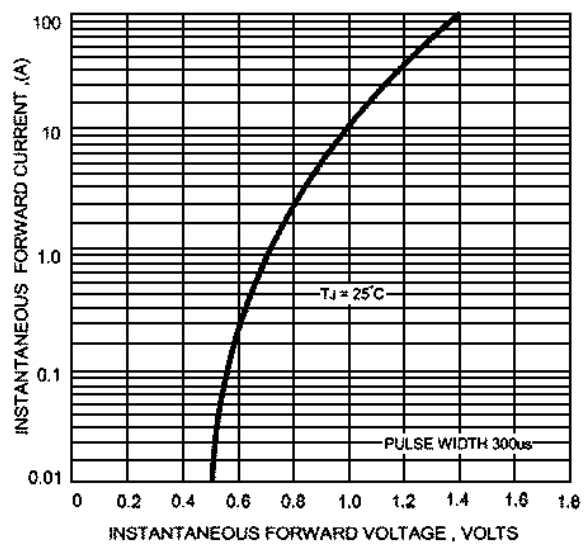


FIG.5 - TYPICAL REVERSE CHARACTERISTICS

